



Creswick Valley Residents' Association &lt;creswickvalleyra@gmail.com&gt;

---

**Feedback on TR124-23 Northland Rd P120 EV Charging**

1 message

---

**Creswick Valley Residents' Association** <creswickvalleyra@gmail.com>

27 August 2023 at 17:48

To: "BUS: TR Feedback" &lt;trfeedback@wcc.govt.nz&gt;

This submission is on behalf of the members and supporters of Creswick Valley Residents Association (CVRA).

CVRA supports the proposal to install two EV chargers and mark parking bays near 51 Northland Road as marked on the notice.

This is an area where there is ample space, and where the location will not affect residents parking, as the area is often used for commuter parking. The provision of EV charging will assist those EV owners who do not have off street parking, which is common in Northland, as well as delivery and passenger vehicles (taxis, Ubers) with electric vehicles.

We caveat this support with our repeated request for a review of the parking on the whole section of Northland Road from the shops and through to the tunnel, as well as the areas around the tunnel, and of Garden Rd. We have requested the Council consider implementing a parking zone in this area to cater for the needs of residents, as these areas are in demand for commuter parking.

Sara Clarke  
Chairperson

--

Creswick Valley Residents' Association Incorporated

<https://www.facebook.com/creswickvalleyra>[www.cvra.org.nz](http://www.cvra.org.nz)

# We are proposing a change in your area

Kia ora,

This leaflet is to let you know about a change we are proposing to make in your neighbourhood.

## Proposal:

<b>Reference</b>	TR124-23 Northland Road, Northland - P120 EV Charging
<b>Location – where we propose to make the change</b>	Northland Road parking area, near the entrance to Northland Tunnel, outside 51 Northland Road.
<b>What we'd like to do</b>	<ul style="list-style-type: none"><li>• Install 2 EV chargers</li><li>• Apply ground line marking for 2 parking bays</li><li>• Apply the following conditions on the 2 bays to: P120, EV Charging only</li></ul>
<b>Why we are proposing the change</b>	<ul style="list-style-type: none"><li>• Transport accounts for 48.3% of carbon emissions from Wellington. Switching from a petrol or diesel to an EV can be one of the biggest opportunities for an individual to reduce their emissions.</li><li>• Electric Vehicles (EVs) are a growing presence in our city. In 2017, 9% of <a href="#">new vehicle registrations</a> in NZ were battery EV or plug-in hybrids. This has increased to 27% over the first 5 months of 2022. This upwards trend is expected to increase as technology improves and we continue in our work in emissions reduction from the transport sector.</li><li>• Our charging facilities need to keep up with this increasing demand.</li><li>• WCC is delivering 60 22.5 kW chargers across the city to enable more people to access charging facilities. Many people do not have off-street parking available to them, so will need publically accessible chargers.</li><li>• This change is in accordance with the Council's Te Atakura Implementation Plan and Parking Policy</li><li>• The change in parking settings (P120, EV only) is consistent with our parking enforcement abilities and consistent with wider council-controlled parking settings in EV charging-equipped bays. It ensures that the bays are used for the intended purpose, and we have a turnover to enable a range of users to utilise the facility.</li><li>• This area currently has a paucity of EV charging facilities</li></ul>
<b>Impact</b>	<ul style="list-style-type: none"><li>• <b>Strategic Drivers:</b><ul style="list-style-type: none"><li>▪ Installation of a network of chargers addresses the real/perceived barrier of a lack of EV charging infrastructure. This will enable more people to switch to lower-carbon passenger vehicles.</li><li>▪ Supporting EV vehicles is a strong indicator from WCC of low-carbon transport</li></ul></li><li>• <b>Net parking impact</b><ul style="list-style-type: none"><li>▪ Convert two unrestricted parking spaces onto two EV parking spaces</li></ul></li><li>• <b>Pedestrian impact</b></li><li>• No change. Infrastructure will not impact any designated pedestrian corridors.</li></ul>
<b>How this relates to the parking policy</b>	<ul style="list-style-type: none"><li>• Support move to becoming an eco-city – facilitate the uptake of car sharing, electric vehicles and other transport with low carbon emissions. Manage parking and incentivise a decrease in vehicle use to contribute</li></ul>

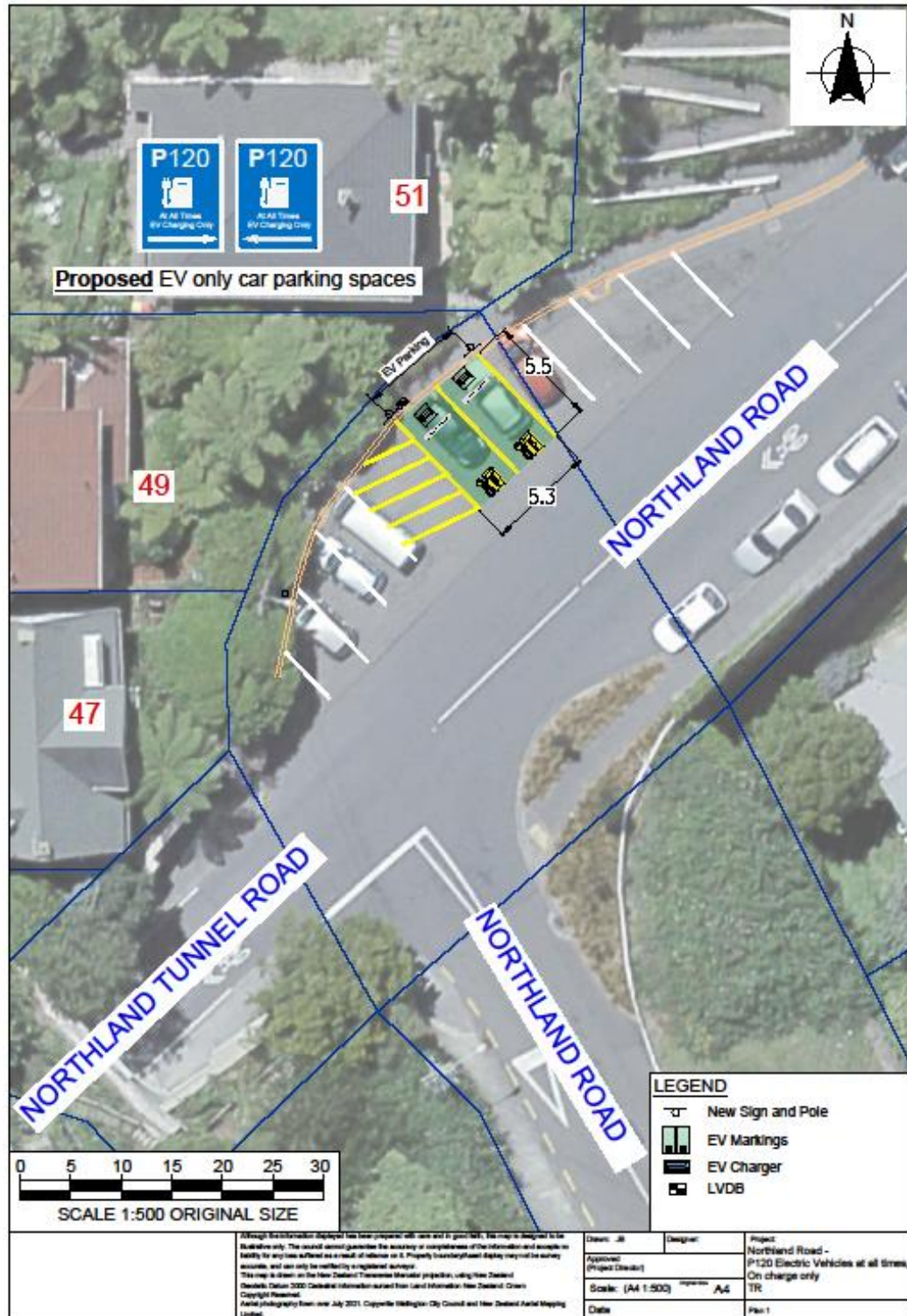
# We are proposing a change in your area

	<p>to a reduced carbon emissions, better water quality, air quality, stormwater management and biodiversity outcomes</p> <ul style="list-style-type: none"> <li>• Support shift in type of transport used – facilitate a shift to using active (eg, walking and cycling) and public transport through parking management and pricing, to move more people driving fewer vehicles.</li> <li>• Support city place-making, amenity and safety – ensure on-street parking design and placement supports overall city amenity, safety, community building, heritage, creative arts, good urban design outcomes and attractive streetscapes.</li> </ul>
<b>Additional Information</b>	<ul style="list-style-type: none"> <li>• The location of the chargers at this location has been selected to               <ul style="list-style-type: none"> <li>○ maximise the use of public funding with regards to infrastructure costs</li> <li>○ Provide safe and unobstructed access to chargers</li> <li>○ Provide future-proofing so that this site can be upgraded to hold more chargers in the future if required</li> <li>○ Provide EV chargers in an area which currently lacks facilities</li> </ul> </li> <li>• To view the legal description for this Traffic Resolution, an electronic copy of the report will be available on the Council's website from 9.00am Tues 11 July 2023 at <a href="https://www.letstalk.wellington.govt.nz/">https://www.letstalk.wellington.govt.nz/</a> or you can call (04) 499 4444 and we will send one out to you.</li> </ul>
<b>Privacy</b>	<ul style="list-style-type: none"> <li>• Your privacy is important to us. Please <b>DO NOT</b> add specific personal details to your feedback (i.e.: full name, address, etc)</li> <li>• What we do with your personal information: All submissions (<b>including your first name</b>, but not contact details) are provided <b>in their entirety</b> to elected members and made available to the public on our website and at our office. Personal information (including contact details) will also be used for the administration of the consultation process including informing you of the outcome of the consultation. All information collected will be held by Wellington City Council, 113 The Terrace, Wellington, with submitters having the right to access and correct personal information.</li> <li>• For more information regarding our Privacy Statement please check our webpage: <a href="#">Privacy statement - Wellington City Council</a>.</li> </ul>
<b>Feedback</b>	<ul style="list-style-type: none"> <li>• If you would like to provide us with specific feedback, which will be added to the Traffic Resolution following consultation and made public in full, you can do so by filling out an online submission form, downloading a printable submission form on <a href="https://www.letstalk.wellington.govt.nz/">https://www.letstalk.wellington.govt.nz/</a> or emailing us at <a href="mailto:trfeedback@wcc.govt.nz">trfeedback@wcc.govt.nz</a>. <b>Please note if you are giving feedback the consultation period opens at 9.00 am Monday 14 August 2023 and finishes at 5.00 pm Sunday 27 August 2023.</b></li> </ul>
<b>Next Steps</b>	<ol style="list-style-type: none"> <li>1. Feedback collated by Monday 28 August 2023.</li> <li>2. The proposal will go to the Koata Hātepe   Regulatory Processes Committee meeting on Thursday 5 October 2023.</li> <li>3. If approved, the proposal will be installed within the following three months.</li> </ol>

# We are proposing a change in your area

Absolutely Positively  
**Wellington City Council**  
Me Heke Ki Pōneke

## Traffic Resolution Plan: TR124-23 Northland Road, Northland - P120 EV Charging



# We are proposing a change in your area

## Legal Description:

Add to Schedule B (Class Restricted) of the Traffic Restrictions Schedule

Column One	Column Two	Column Three
<b>Northland Road</b>	<i>P120 EV Vehicles Only, At All Times (On Charge Only)</i>	<i>North side of Northland Road, commencing 17 metres north east of its intersection with Northland Tunnel Road (Grid coordinates X=1,747,062.22 m Y=5,431,057.11m) and extending in an easterly direction following the northern kerb line for 5.3 metres.</i>

**Prepared By:**

Peter Jones

**Project Development Manager- EV  
Chargers**

**Approved By:**

Evandro Sherer

**Traffic & Resolutions team leader**

**Date:**

04/08/23